

# Act to Adapt

## Under Hamdon Parishes

Supporting communities across Somerset to adapt to climate change through a series of collaborative events



Photo © Jim Champion (cc-by-sa/2.0)

### Shaping a plan for your community

Share your ideas for how the Under Hamdon Parishes of Ash, Martock, Kingsbury Episcopi, South Petherton, and Stoke Sub Hamdon can adapt to Climate Change!

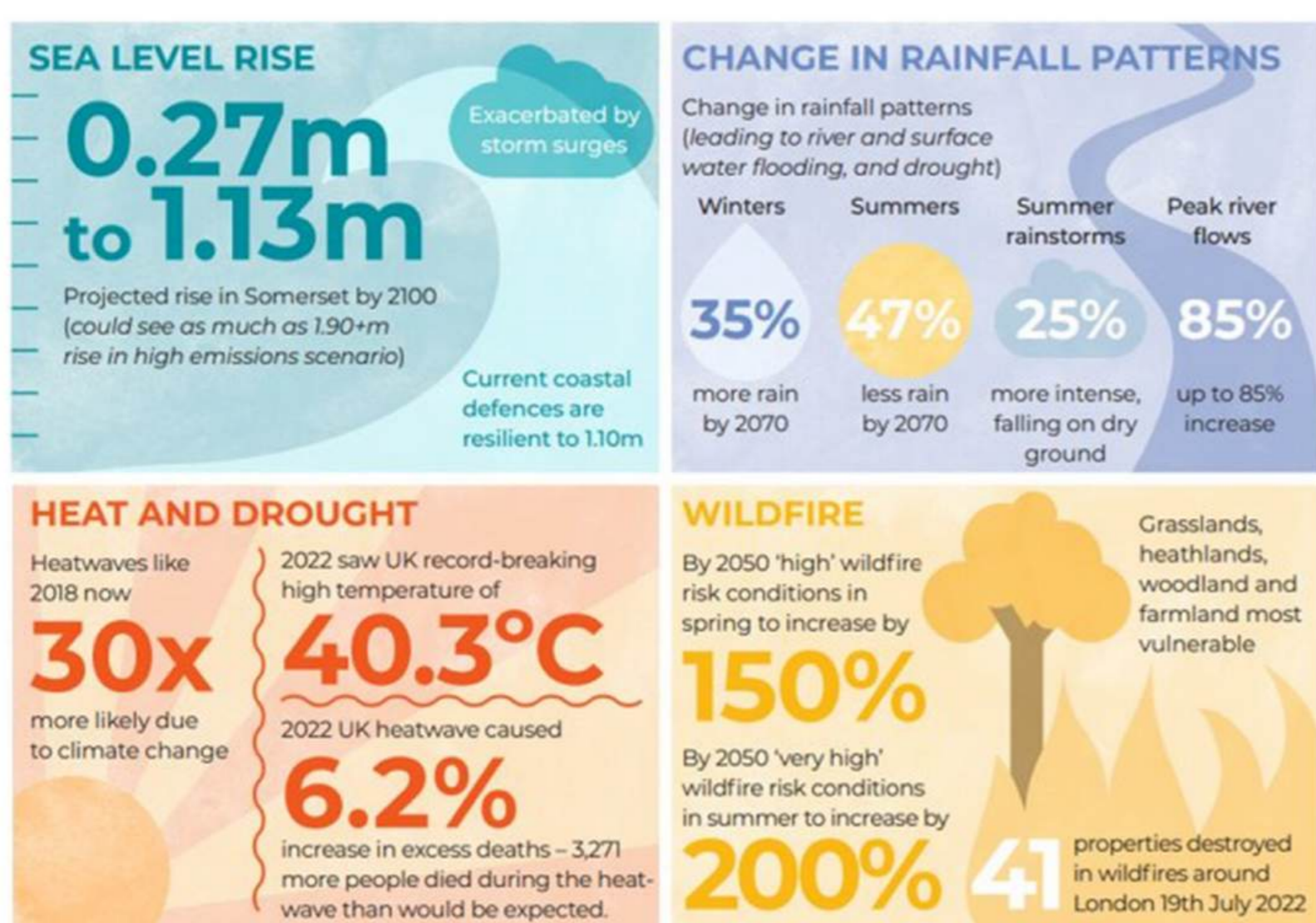
#### What is Adaptation?

Adjusting to the current impacts of climate change or planning for those that are projected.

Adaptation can seek to limit or avoid harm, or explore beneficial opportunities.



#### Why do we need to Adapt?



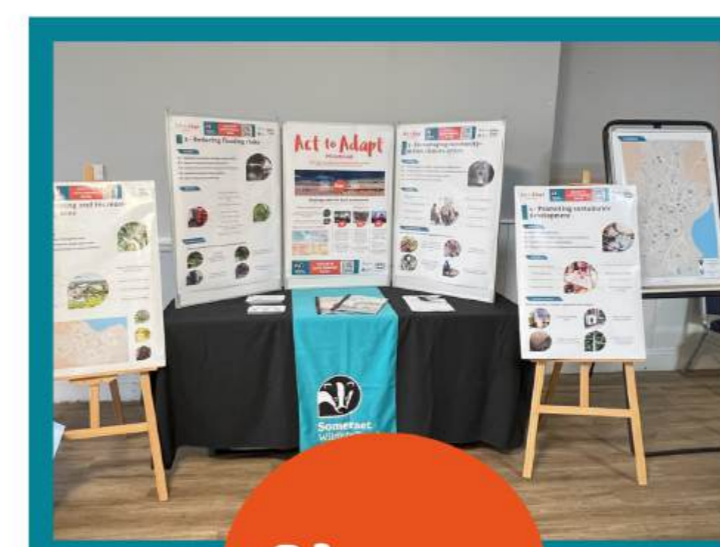
#### The process



Talk

A workshop to bring local people together to talk about areas at risk from climate change impacts and potential solutions to adapt.

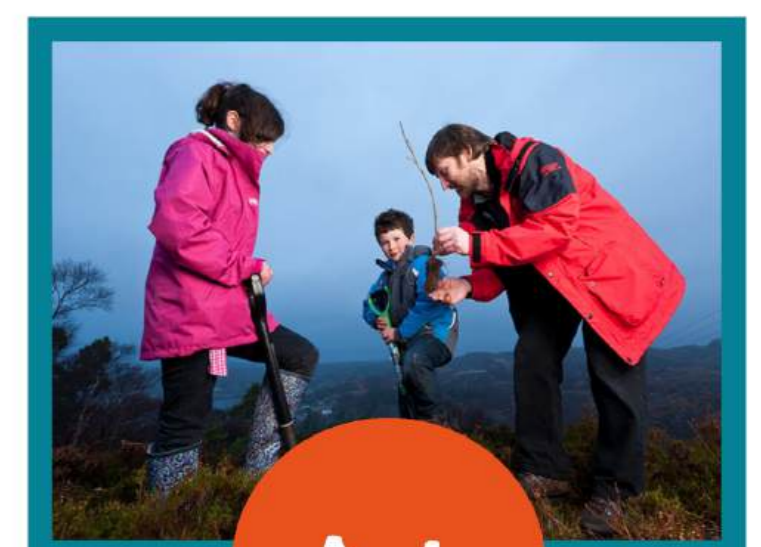
This is a community-wide effort – every voice and idea is valuable to feed into a Climate Adaptation Plan.



Shape

Through online and in-person opportunities, residents will get a chance to provide feedback and suggest other actions to be included in the climate adaptation plan.

This will ensure the plan is shaped by local voices and knowledge.



Act

The Climate Adaptation Plan will be launched with an event, bringing residents together to act and implement as many adaptations as possible!

- The plan will:
- Guide future action
  - Help to track progress
  - Offer advice



SCAN ME TO LEAVE FEEDBACK ONLINE



Team Wilder

Funded by Somerset Rivers Authority



# 1 - Improving and increasing green spaces

## Actions

- 1.1 - Identify and protect existing trees through Tree Protection Orders**
- 1.2 - Implement tree planting strategies**
- 1.3 - Establish community-managed green spaces**
- 1.4 - Promote climate resilience management of green spaces**
- 1.5 - Create wildlife-friendly areas in churchyards**



## Benefits

Mitigates urban heat island effect

Provides shade and refuge

Improves water quality

Benefits health and wellbeing



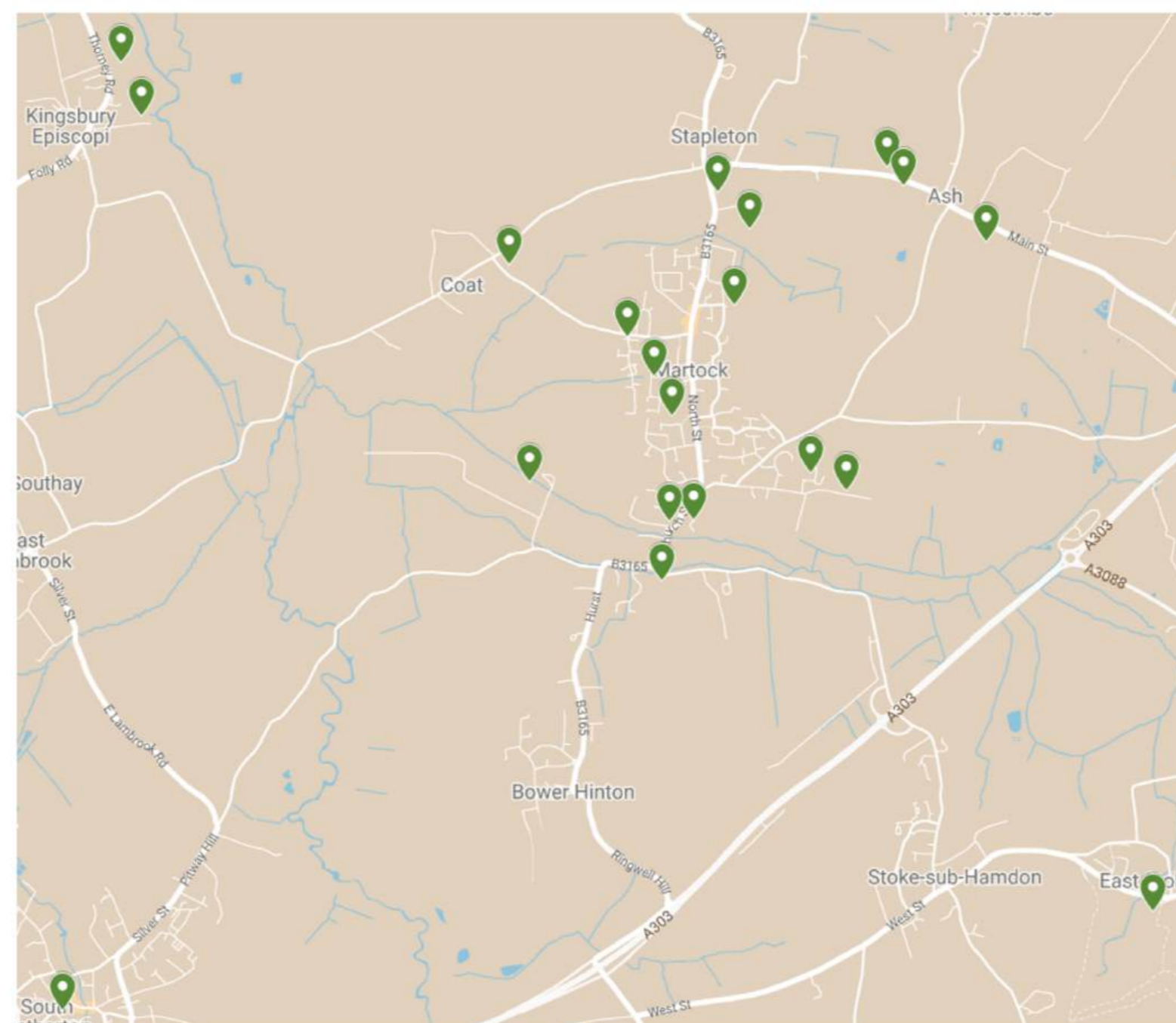
Captures and holds water above and below ground

Reduces stormwater runoff

Provides habitat for wildlife

Mitigates climate change

## Locations





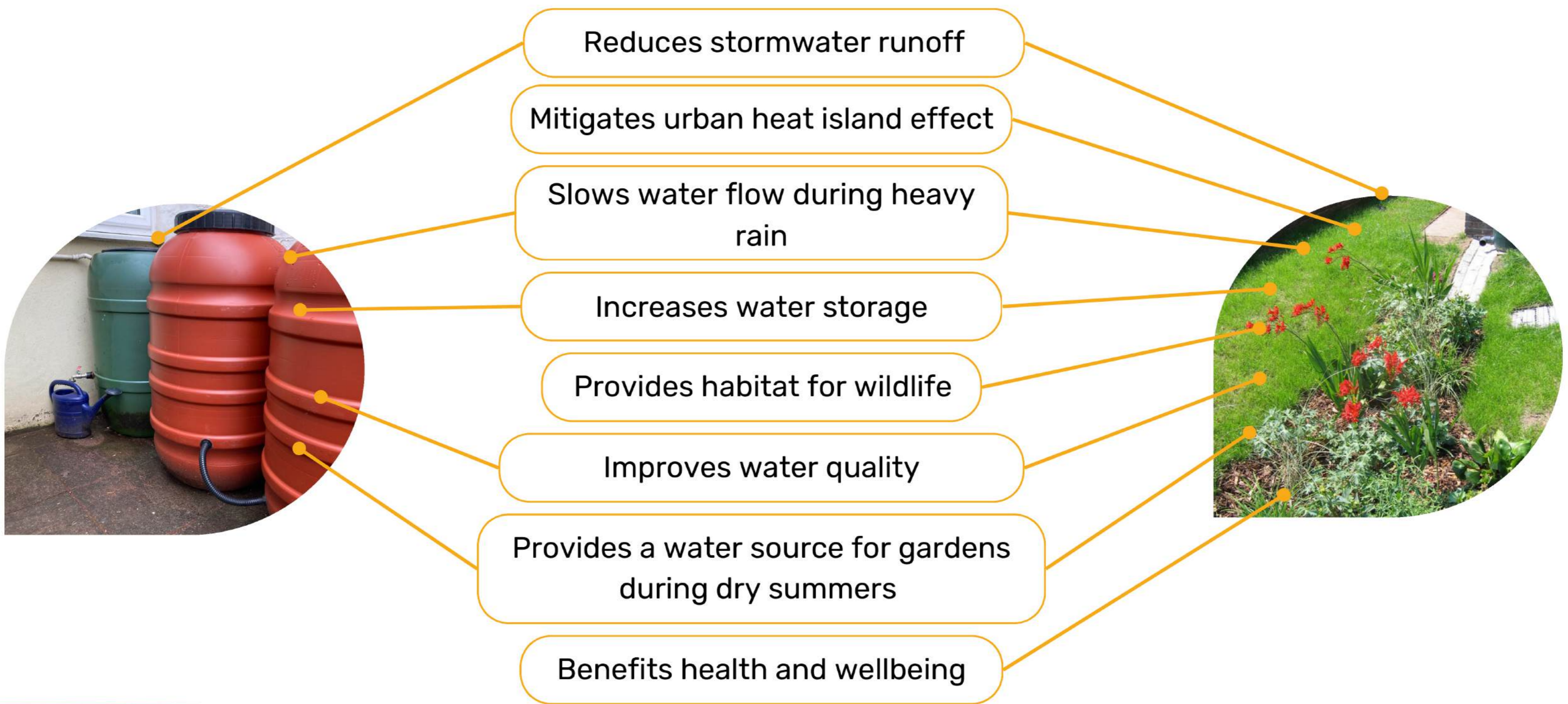
# 2 - Adapting to flooding

## Actions

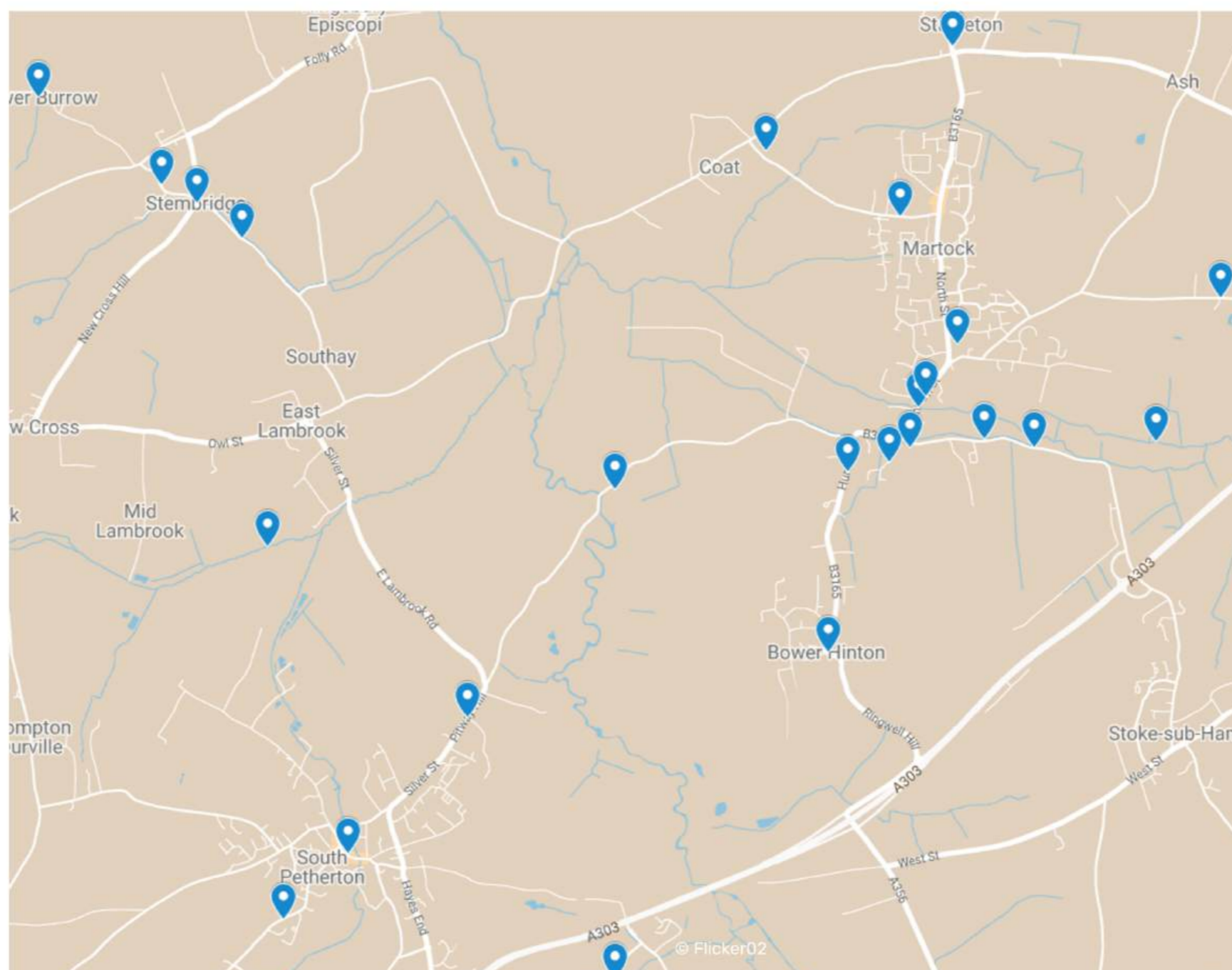
- 2.1 - Promote and strengthen community flood response**
- 2.2 - Maintain drains, gullies and watercourses**
- 2.3 - Implement rainwater collection and sustainable drainage systems**
- 2.4 - Support vulnerable residents during flood events**
- 2.5 - Coordinate parish-wide flood management**



## Benefits



## Possible projects





# 3 - Building local climate knowledge and action

## Actions

- 3.1 - Partner with educational institutions**
- 3.2 - Form climate action groups across connected villages**
- 3.3 - Create networks for sharing local environmental best practices**
- 3.4 - Support vulnerable groups through community skill-sharing**



## Benefits

Raises climate awareness

Motivates sustainable actions

Supports green economy

Enables youth leadership



Builds community collaboration

Facilitates open dialogues

Supports sustainable living

Enables informed choices

## Possible projects

**Here are some ideas for projects suggested by local residents:**



Identify the most vulnerable groups and plan support strategies



'Cool place' similar to community hubs providing a 'warm place' in winter



Run a competition to fund and promote environmental champions



Set up a community climate action group



# 4 - Influencing local planning and development

## Actions

- 4.1 - Improve existing housing
- 4.2 - Lobby for climate-resilient new developments
- 4.3 - Integrate climate adaptation into Neighbourhood Plans
- 4.4 - Engage with parish councils on climate resilience policies
- 4.5 - Coordinate with landowners and agencies on adaptation measures



## Benefits

Enhances climate resilience

Fosters collaboration

Facilitates communication

Involves the community



Supports sustainable living

Reduces heatwave impacts

Reduces flooding risks

Promotes environmental stewardship

## Possible projects

Here are some ideas for projects suggested by local residents:



Ensure current and potential planning/development embeds adaptation



Engage agencies and community groups



New builds - Solar panels, SuDS (Permeable paving), swift boxes, better soil in gardens



Collaborate with landowners on adaptation

# Locations

