

# Act to Adapt

## Spaxton

Supporting communities across Somerset to adapt to climate change through a series of collaborative events



## Shaping a plan for your community

Share your ideas for how the Spaxton can adapt to Climate Change!

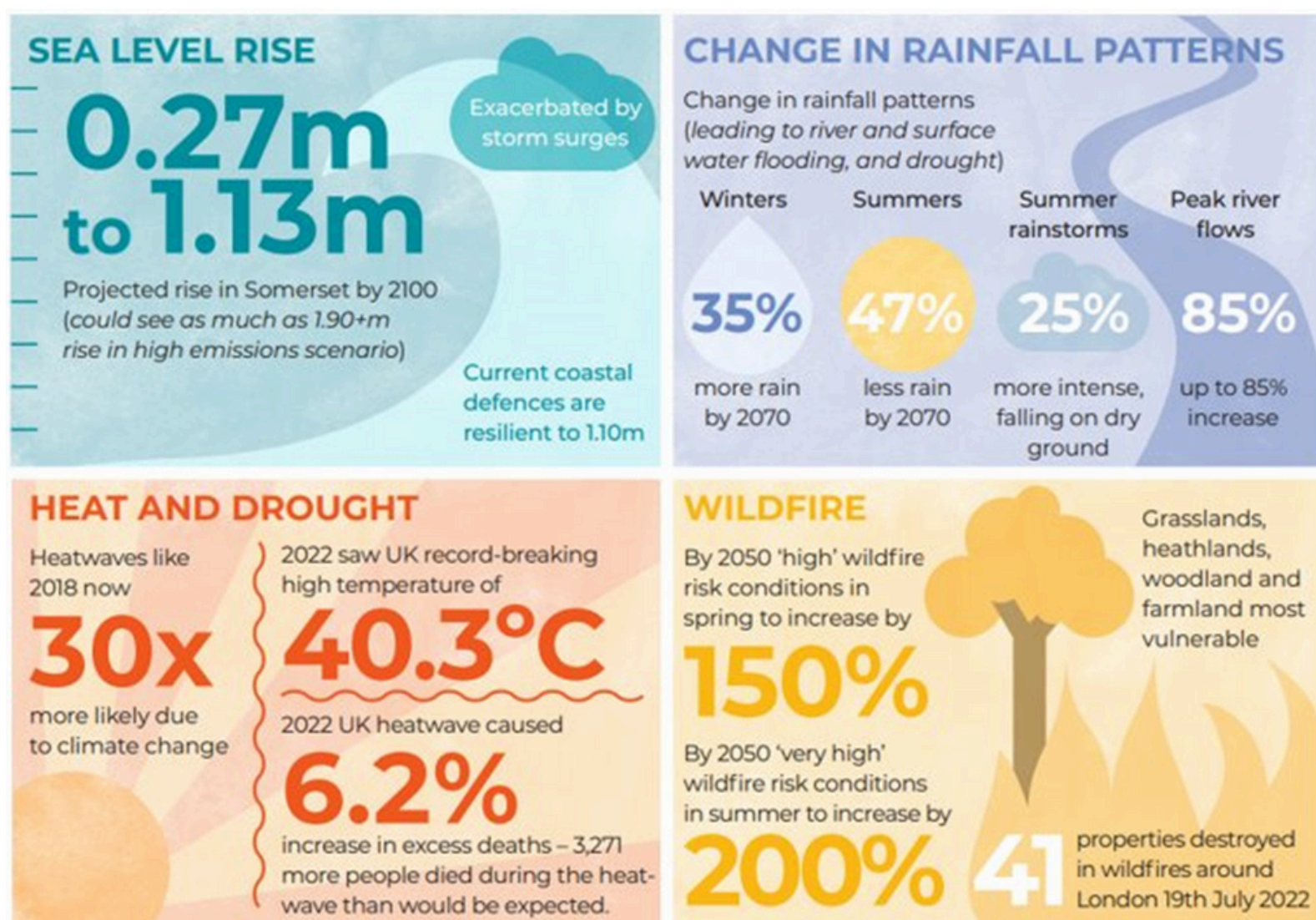
### What is Adaptation?

Adjusting to the current impacts of climate change or planning for those that are projected.

Adaptation can seek to limit or avoid harm, or explore beneficial opportunities.



### Why do we need to Adapt?



### The process



Talk

A workshop to bring local people together to talk about areas at risk from climate change impacts and potential solutions to adapt.

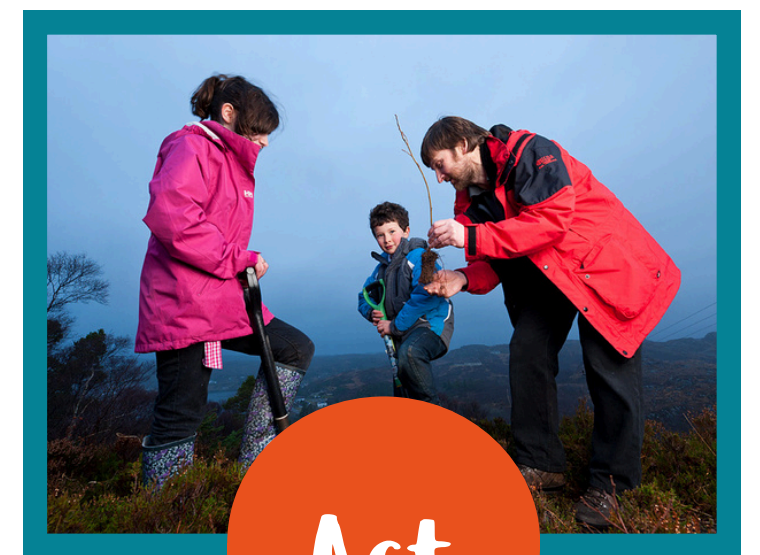
This is a community-wide effort – every voice and idea is valuable to feed into a Climate Adaptation Plan.



Shape

Through online and in-person opportunities, residents will get a chance to provide feedback and suggest other actions to be included in the climate adaptation plan.

This will ensure the plan is shaped by local voices and knowledge.



Act

The Climate Adaptation Plan will be launched with an event, bringing residents together to act and implement as many adaptations as possible!

The plan will:

- Guide future action
- Help to track progress
- Offer advice



SCAN ME TO  
LEAVE FEEDBACK  
ONLINE



Funded by

Somerset  
Rivers Authority



# 1 - Improving and increasing green spaces

## Actions

- 1.1 - Increase tree and hedge planting
- 1.2 - Create wildlife habitats and corridors
- 1.3 - Promote climate resilience management of green spaces
- 1.4 - Promote wildlife-friendly farming



## Benefits

Mitigates urban heat island effect

Provides shade and refuge

Improves water quality

Benefits health and wellbeing



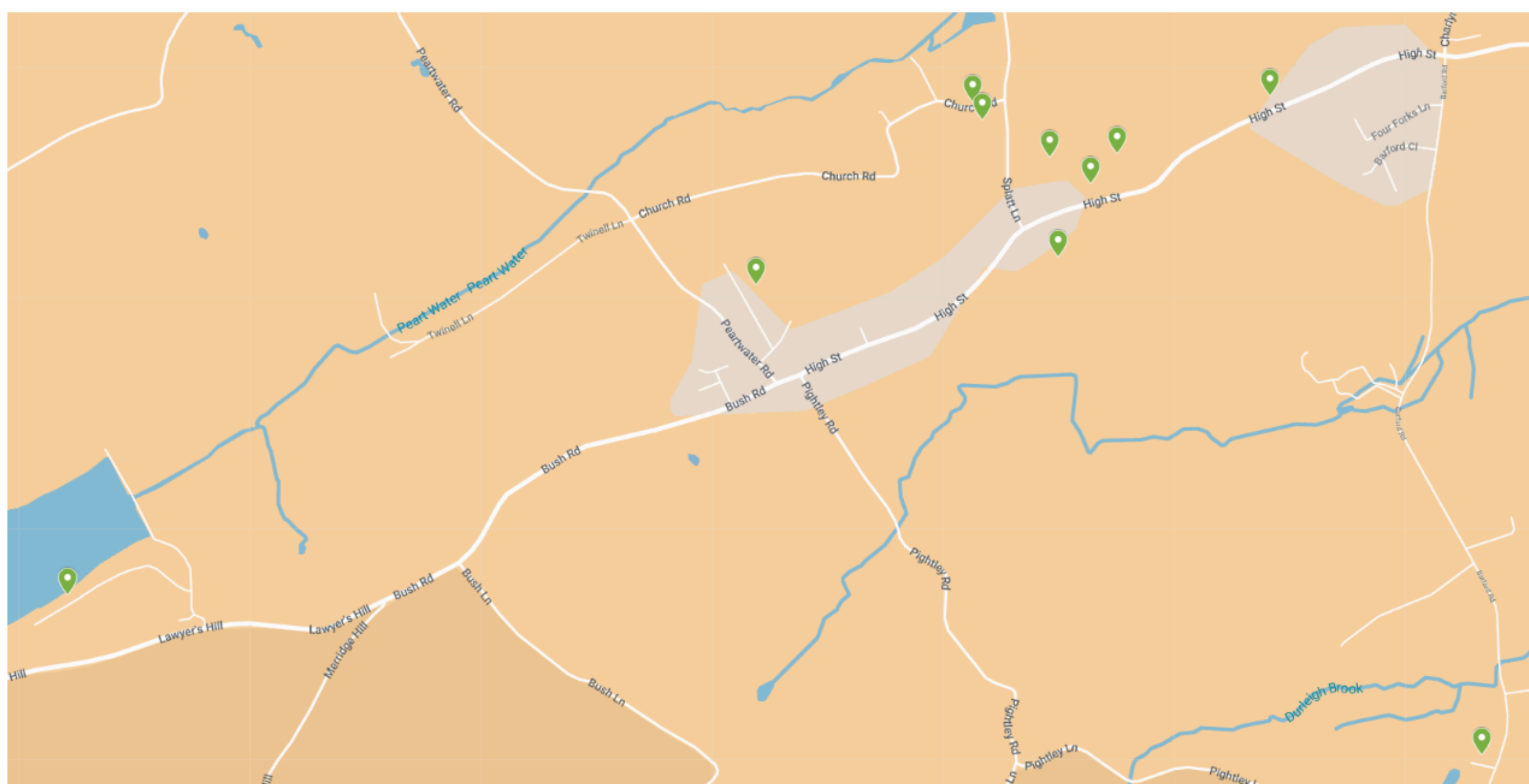
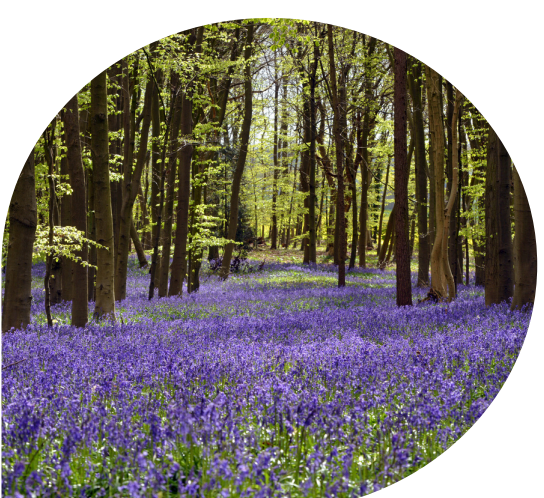
Captures and holds water above and below ground

Reduces stormwater runoff

Provides habitat for wildlife

Mitigates climate change

## Locations





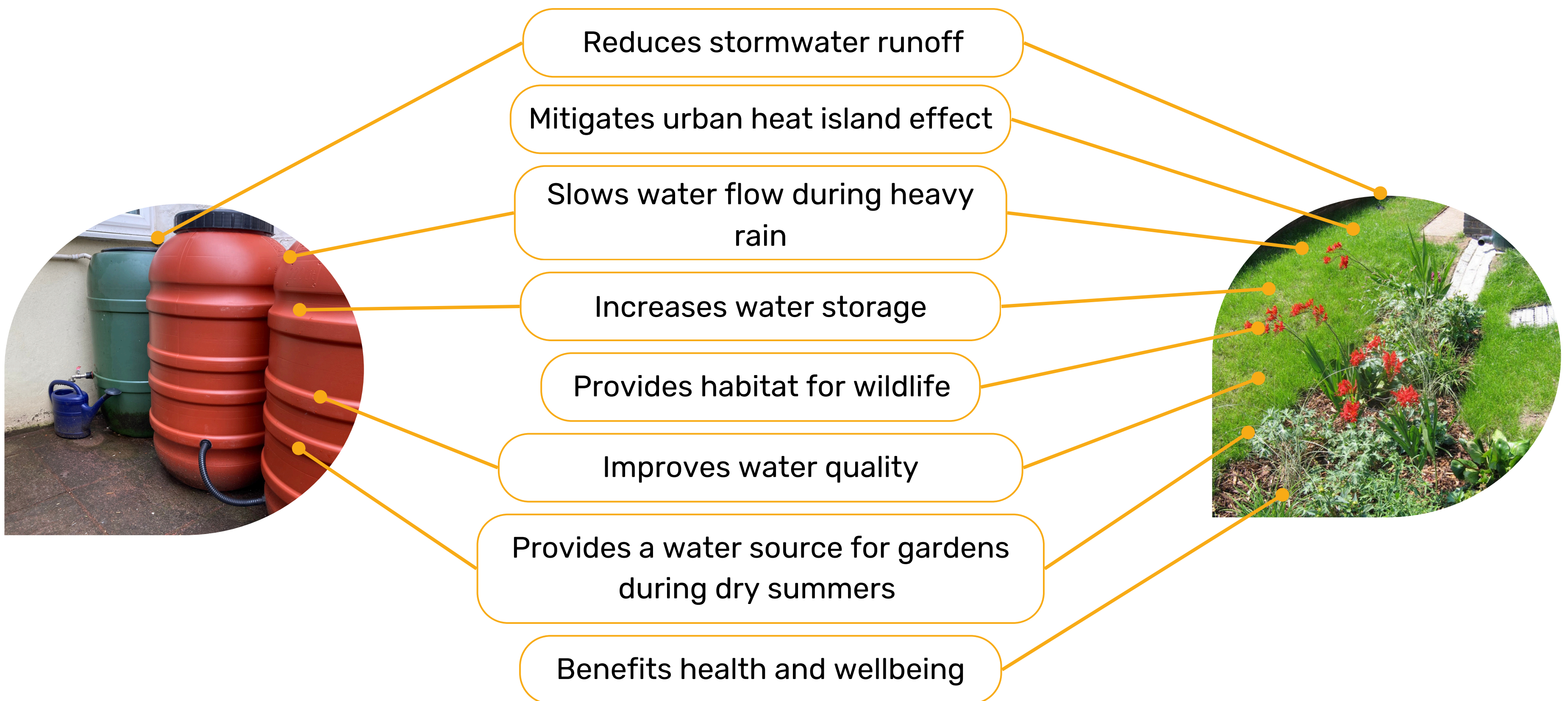
# 2 - Adapting to flooding

## Actions

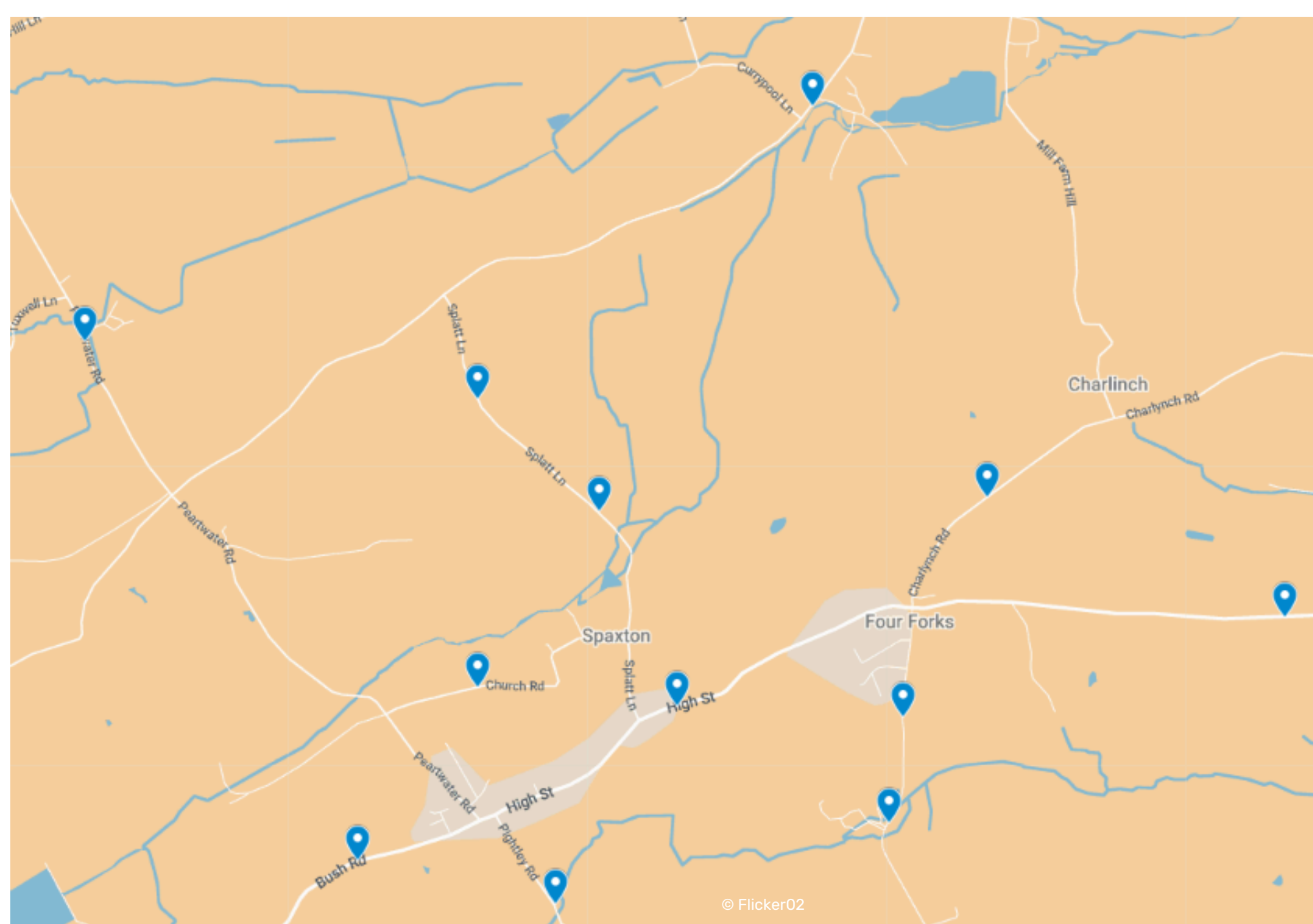
- 2.1 - Promote and strengthen community flood response
- 2.2 - Maintain drains, gullies and watercourses
- 2.3 - Create natural water storage solutions
- 2.4 - Collaborate with landowners and authorities



## Benefits



## Possible projects





# 3 - Building local climate knowledge and action

## Actions

**3.1 - Develop education and awareness programmes**

**3.2 - Strengthen volunteer participation**

**3.3 - Establish community-led resilience initiatives**

**3.4 - Create networks for sharing expertise and resources**



## Benefits

Raises climate awareness

Motivates sustainable actions

Supports green economy

Enables youth leadership



Builds community collaboration

Facilitates open dialogues

Supports sustainable living

Enables informed choices

## Possible projects

**Here are some ideas for projects suggested by local residents:**



Community vegetables gardens



Forum for groups across Somerset to share knowledge



Organise Bio blitzs to help baseline the nature



Engage Spaxton School and young people



# 4 - Local empowerment and community planning

## Actions

**4.1 - Improve existing housing**

**4.2 - Lobby for sustainable development standards for new builds**

**4.3 - Influence agricultural and land management policy**

**4.4 - Create funding mechanisms**



## Benefits

Enhances climate resilience

Fosters collaboration

Facilitates communication

Involves the community



Supports sustainable living

Reduces heatwave impacts

Reduces flooding risks

Promotes environmental stewardship

## Possible projects

Here are some ideas for projects suggested by local residents:



Working with developers to be more ethical in their house building



Campaign for environmental law and regulation enforcement





Lobby the Government to change agricultural policies



Events to raise money to fund adaptation

# Locations

-  Improving and increasing green spaces
-  Reducing flood risks

